

Dating Made Easy



By Kathy Thompson

Introduction

Dating Made Easy is going to take you where you've never gone before. Please, keep an open mind, and before you know it, your dating and relationships will soar. There are five separate reports you can use as your guide through the confusing maze of the dating world, both on line and off. Enjoy.



Your Dating Checklist

Have your on-line dates bombed? How do you choose someone to date?

Ssshhh! Don't tell your date about this. If you're on line looking for a date, here's a secret way to determine what they're really like. Take a good look at the faces of your potential dates. Each face reveals its personality, background, and destiny. Keep this checklist handy as you look through all those photos. Also use this with anyone who appeals to you.

___ Adventurous/risk taker - high prominent cheekbones, cleft in chin

___ Emotional - large eyes (little white area), turned up nose

___ Possessive - ears stick out

___ Romantic - dimple in chin

___ Competitive - wide face, strong jaw & chin

___ Critical - eyes slant down

___ Friendly/Informal - low set eye brows, large ears

- ___ Sensuous - full lips, bedroom eyes, eyes that slant up
- ___ Playful - dimples in one or both cheeks, dimple in chin
- ___ Moody - the left and right sides of the face are opposites
- ___ Quiet/Reserved - deep set eyes, small iris, small mouth
- ___ Sexy - full lips, lower eye lid droops, thin lines under eyes and near the temples, large dark eyes, large upper lid, wide groove under nose
- ___ Dominant - high domed forehead, pointed chin
- ___ Impatient - eyes are very close together
- ___ Generous - full lips, round nostrils or wide flared nostrils
- ___ Dependable - wide nose wings.
- ___ Creative - dome forehead, round nose tip, curved eyebrows, round head
- ___ Intellect - thin face, large forehead, small jaw & chin
- ___ Suspicious - crooked mouth
- ___ Violent - whites under both irises

Last, get a mirror. Check yourself against this list. As you are looking at yourself, look at your prospective date. Do you have the same type of features? The more facial features you have in common, the more compatible you are. You'll have similar interests.



How to Pick a Sexy Partner

The face reveals a lot about a person; their moods, personality, character, health, life expectancy, and sex life.

The mouth and eyes reveal the most about a person's sensual needs, desires, and capabilities.

Sexy Mouths

Mouths show your capacity for love. A thicker upper lip indicates more capacity TO LOVE. A thicker lower indicates more capacity TO RECEIVE LOVE. So thick lips will ---- I'll let you interpret that.

Mouths also indicate how we express ourselves. It also indicates your degree of sensuality, and even how we interpret what others tell us.

Full lips are emotionally expressive and have a sense of humor.

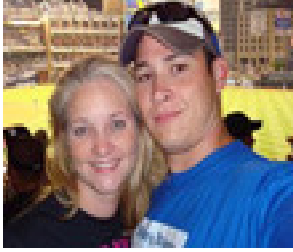
If the lower lip is fuller than the upper, they are very persuasive and focus on outcomes. If the upper lip is fuller than the lower, they are out-spoken, express their feelings verbally, and perspective.

Thin lips are reserved and mistrust flattery.

The upper lip represents the female sex organs.

That groove from the nose to the upper lip represents the male sex organs.

The groove indicates your potential for pro-creation - how many children you can have. Many men are very sensitive about this area, and this may be why they wear a moustache.



1. Dark lips have extravagant sexual needs. They know exactly what they want in bed. They aren't too shy to take the initiative, and may amaze their partner with uninhibited passion.
2. Large mouths are imaginative lovers. They know to give as well as take. They take their time reaching an orgasm, a very potent lover.
3. If the lower lip is thicker than the upper lip, they are very sensual lovers. They search compulsively for love and eroticism. Also they are very talkative.
4. If both lips are full, they are generous and have a great capacity for love making.
5. A convex mouth with thick lips, especially with women is prone to be cold-hearted, wanton, strong willed, love luxury and make fast decisions.
6. A thicker upper lip love sex.
7. A thicker lower lip considers sex to be indecent. And seldom get involved.
8. Upper Lip curves downward at corners - generous with their love, and may be taken advantage of.
9. A Small mouth is a controlling but interesting lover who knows how to celebrate sex as an art, always has a quick orgasm, inventive erotic imagination.
10. Large mouth - their partner's arousal is as important to their own, imaginative lover, knows how to give as well as take, taking time to reach an orgasm, very potent lover.



Sexy Eyes

Eyes reveal your attitude/outlook on life and attractiveness to other people.

Directly under the eyes is the love region. It continues horizontally from the end of the eyes to the hairline. This area reveals the ability to love. Each line under the eyes could indicate a lost love.

Small thin lines running under the lower lid are constantly ready for arousal, voracious sexual appetite, enjoys frequent masturbation, and is not restricted to sexual taboos.

The upper eyelids reflect your need for intimacy requirements. The more abundant the upper lid, the more intimacy that person needs. They like to bond with their partner. No upper eyelid means, they need their own space. If they are thin they appreciate closeness and can act independently.

1. Protruding eyes have a strong sexual appetite and will try anything to satisfy it.
2. If the lower eyelid is sagging, rounded, bulging out, they have very strong sexual appetite.
3. The larger the upper eyelid, the more intimacy the person requires.
4. At the corner of the eyes near the temples, if the skin is rich and vivid in color, that person is sexually strong and passionate.
5. Dark eyes enjoy intense and varied sex, once drawn out of reserve there's no stopping.
6. Large eyes are aroused quickly, imagine unusual erotic games, but might need a little push to act on them.
7. If the upper eyelid raised or high at the outer corners, it is a sign that person is full of vitality and has a lot of sex appeal.
8. If the skin surrounding the inner corner of a person's eye is fair and has a bright luster, it indicates their sexual equipment is in good working order.

9. If the upper eyelid is raised or high at the outer corners, it is a sign the person has a lot of vitality, a strong personality, and lots of sex appeal.

10. Just below the rim of the eyelid near the outer corner, if this area is fleshly and swells up when the person smiles, it indicates he or she is sexually potent, a very active sex life, and enjoys sexual climaxes.

Using this information you can select a partner that suits your needs. And using a mirror you can check yourself out as well.



Are You Two Compatible?

Sssshhh! Don't tell your partner--yet.

Best of all - You will be able to treat your partner as a unique individual. He/She will love you for it. And watch your relationship soar. Score Big!

You are about to literally change your outlook on your relationships. Do you want to score big with your partner? Keep an open mind and have fun with this, because this is a whole new approach to your relationship. Something you never heard of. That's why I want you to keep an open mind. AND BRING A MIRROR! Go ahead, I'll wait-----

Don't laugh--- because it does work! We are going to do this with FACE READING!

Your face is a road map of your mind. Your face shows your personality, strengths, and weaknesses.

FACE READING is easy and a simple method of understanding yourself and others. Knowing the personality behind the face, you can approach your partner according to their personality. Understanding, accepting, and relating to basic differences in personality is the key to better communications and relationships with everyone in your life.

All right--let's find out--- **ARE YOU TWO COMPATIBLE?**

"Birds of a feather stick together." It is a familiar true expression. Notice what you have in common with your friends, similar interests plus similar features. There will be less adjusting to do when couples have similar features.

Thin skinned people (skin hangs on face) are sensitive, gentle, and have fine qualities. They respond quickly whether it is a man or woman. Thick skinned people (firm tight skin) are hardy, vigorous, durable, genuine, and rough. The two are not compatible. Keep this in mind during dating, marriage, and sex.

The narrow face has little confidence, is sensitive, timid, shy. The broad face is confident, bold, ambitious, and courageous. They are not compatible.

Keep this in mind during the relationship. Small eyes, small mouth, and small noses are self-contained, self-centered, quiet, tight, introverts who bury their emotions. Large eyes, large mouth, large noses are out-going, like people, generous, emotional.

Can you imagine these two types as a couple? No, they are not compatible. Knowing these types can help you determine whether someone will be compatible or hinder your own vitality. Choose someone who will complement you, giving you meaning and a better life.

People enjoy doing what they are built to do, and harmonious relationships exist when they are with like people. The best way to win a battle is never to have one. Adjust your reactions to the situations and the reactions of your spouse/partner.

Criticalness breaks up more relationships than anything else. And it is usually over money or the children. The couple is still in love, which is why the break up causes so much heartache and pain. You have to be a friend before you can be a sweetheart or lover. Try to make a list of your partner's traits, and then do three things they will like.



5 - BASIC FACE SHAPES

*ROUND FACE - adaptable, flexible, witty, diplomatic, wealthy, people person

*SQUARE FACE - strong willed, strength, stubborn, slow thinker, works for security

*LONG FACE - poise, charmers, image maker, fortunate, born leaders

*TRIANGULAR FACE (wide forehead & pointed chin) - honest, integrity, ambitious, idealistic, sensitive, spiritual

*BLUNTED TRIANGLE FACE (narrow forehead & wide jaw & chin) - vitality, out-going, active, restless, adventurous

**If either of you is a combination, you take personality traits from both.

COMPATIBLE

Round & Triangular

Triangle & Blunted Triangle

Blunted Triangle & Square

Square & Long

Long & Round

INCOMPATIBLE

Square & Round

Round & Blunted Triangle

Blunted Triangle & Long

Long & Triangle

Triangle & Square

This is going to get wilder. Stick with it. Be sure you have your mirror handy!!! I'll wait. Ready---

Do You Have a Sexy Groove?

The **GROOVE** from your nostrils to the upper lip is also known as the philtrum. It shows productivity and sexuality, both in the procreative processes of life, and also in the creative and productive areas of work.

It is the connecting channel from the nose, representing the male sex organ, to the mouth, representing the female sex organ.

>>DEEP & LONG - sensuality, lavish production, long life (1" long = 100 years)

>>WELL FORMED - long-lasting sex life and many children are possible

>>FLAT OR SHALLOW - not interested in sexual activities

>>FLAT OR POORLY FORMED - not productive in business

>>DEEP, WELL SHAPED - productive in business

>>FLARED (at bottom) - "best" for productivity, sexual energy, several children, good metabolism

>>NARROWING - if shallow to, it restrains productivity, mild fertility, moderate sex drive, one child

>>STRAIGHT & NARROW - restricted in love life & productivity, 1-2 children

>>FLAT/DISAPPEARING - not productive, shows diminishing life force in later years.

So who has the sexier groove? You or your partner? And how many children can each of you have?



29 Secret Tips to Please Your Partner!



Open your mind and eyes wide. Not many people know about face reading, so you're going to have the advantage, the edge. It's so powerful, you will stun your partner, mate, and significant other, anyone you know and meet. They won't know what happened! Keep reading.

You can improve your relationships and sex life! You can prove it to yourself. What you think about most of the time shows up on your face. So your face becomes a road map of your mind. By knowing the personality behind the face, you can adjust your behavior and communications according to your partner's unique personality.

Help them to see a greater perspective and not get irritated by a specific issue. When they are not in charge, they should mind their own business.

Their personality will predict their behavior in any given situation. You can use this information to benefit both of you. So if you know how to read faces you can approach your partner or anyone you meet, and immediately communicate with them successfully. Face Reading (physiognomy) will literally change your outlook on life. Use this one tip and see how it affects your relationship! Enjoy these 29 tips.



1. If you see your partner has very large eyes and/or small ears, make sure they are looking straight at you. They are visual people who need to see what is going on.
2. If your partner's face is shaped like a pear (wide jaw, narrower forehead area), they want to be consulted or they may put up emotional walls.
3. Thin, high, round eyebrows are self-conscious and unsure of themselves. They need to be above reproach. Use compliments, reassure them. Don't rush them.
4. If you notice the bottoms of the eyes straightening out, your partner is tuning you out. They are suspicious and mistrust you. You must gain their trust. Once you do, they will support you.
5. If you see your partner with a straight long nose, use logic with them. Stick to the facts and have your answers ready.
6. Eyes that angle down look for problems and are critical. To them, life is serious. Don't try to cheer them up. That's the way they are.
7. Be authentic with a partner with a thicker upper lip. They are concerned with who you are, more than what you tell them. Relax and be yourself.
8. If your partner has strong protruding cheekbones and a sharply cut jaw, show respect for their opinions and viewpoint. They are used to getting their own way.
9. If the nose is turned up (ski jump) show them how good they will feel. They respond to emotions.
10. Eyes that angle up are optimistic and happy. They expect everything will work out okay.
11. If the eyes are protruding (convex) they love to talk and may not stop. Be careful when you interrupt, they are easily hurt.
12. If the eyebrows lay straight and flat, your approach should be based on ideas and facts.
13. If there is a bump on the bridge of the nose, present yourself firmly, but stay open. They may feel cornered and become feisty.



14. Deep set eyes need time to reflect. They need time to analyze and decide. They may nod a lot. Give them plenty of data and let them make up their own mind.
15. If the nose is convex (hook), be willing to listen to them. They have good ideas and creative solutions.
16. If the forehead is dominant, (largest portion of the face), they are thinkers. Win them over with logic, reason, and details. Give them all the information you can. They love to compare and check for warranties.
17. If the bottom teeth are crooked (difference sizes), your partner may find it difficult to make up their own minds. They can see all sides of a situation. Let them know they made a good decision.
18. If the middle portion of the face (very long nose area) is prominent, don't waste their time. Get to the point. Show them how they can get ahead, and give them results.
19. If the mouth turns down, they see the down side (pessimistic). They are cautious of what people tell them. So be careful with your approach. Point out a few flaws. It will surprise them with your candor.
20. If the lower area (nose tip to bottom of chin) is the most prominent, use an easy going, relaxed approach. Let them make up their own mind in their own time.
21. The teeth are also a clue. If there is a gap between the big front teeth, they can be unpredictable. They like to take risks.
22. If the face appears flat, be polite. Be thorough, but not over flashy.
23. If the eyebrows have hairs between them (appear continuous), your partner is constantly thinking with a non-stop mind. Let them voice their ideas and opinions.
24. If the eyebrows looked chaotic (tangled), they will try to play the devil's advocate. They may challenge you. They like to shake things up. Validate your information.
25. Curved/rounded high set brows are people oriented. Use stories, personal endorsements. Demonstrate how it works.
26. Get to the point with your partner who has a diamond shaped face. They don't have time to waste and can be impatient.

27. If your partner has angled eyebrows they like to be consulted. Ask them for their input, and let them know it is valued. Allow them to feel in control.

28. If the eyebrows are thicker at the ends, pay attention to details and technicalities. Know what you are talking about.

29. If the eyebrows flow up and out like wings, show them the big picture. Use some facts, but not all the details. Discuss a positive vision of the outcome.

Using the above tips will help you establish rapport and get on your partner's wavelength. You will be able to treat them as an individual according to their personality. Now you know what to expect from your partner.

Faces do communicate their personalities. Using these tips you will understand not only your partner, but yourself as well. When you are ready, tell them what you are doing.



Dangers of Dating

Dating seems to be a very exciting term. It would mean a new phase of a person's life is ahead. Whatever the purpose of dating is, one must always be responsible, and by all means, be cautious about being into this kind of activity. Since you are getting involved with unknown individuals, you must equip yourself with the necessary protection or security whatever risks there are. Yes, there are risks.

Online dating is of course, safe from outside risks since it happens with a distance between the people involved. However, there is a consequence with the majority of those involved to meet the online partner they have. This is when the risks start.

According to studies in the US, Dating, violence is rampant among adolescent girls, especially those reporting having had the experience of coitus or sexual intercourse.

Adolescent girls who were hurt by a date on purpose in the past year are more likely to experience sexual health risks, such as having the possibility to acquire human immunodeficiency virus infection and other sexually transmitted infections, unwanted pregnancy may also happen out of the blue. Sad to say, unwanted pregnancies resort to abortion in some cases.

Women are physically weak. There are a lot of possibilities that they are being taken advantage of by their dates. The objective of online dating is noble, but there are these

people who are using it as a venue for their worldly wants. The local governments are now integrating this issue in their health programs for women, as well as the local agency responsible for the crime-related aspects, must do their share.

As for the adult women who are into dating, most of them are out due to long-term relationship heartbreak, and so they are there to meet anyone possible. This reason pushes them to the risks of meeting the wrong man but still believing that he is right. With that, they are prone to possible sexual abuses or other forms of abuse. The most common risk in online dating is both financial and emotional in nature. Financial risk comes in the form of scam. You must be cautious and try to read between the lines if the person is just playing around. The emotional risks are results of having a married date, and so forth.

Dating, companionship and courtship are really good for us, but some come in disguise. They are hidden black agenda, so be careful.

Conclusion

Review this report again and again. I'll bet you can go out and get what you want from your significant other today.

I hope this information will help you with your understanding of human behavior. You have a choice on how you use your personality; to your advantage or disadvantage, positively, negatively.

Now you can help guide your partner/mates to do the same.

This information comes from over 20 years of watching, observing and researching the world of faces.

Kathy Thompson is available to provide classes and workshops on Relationships using Face Reading.

Kathy Communicates www.kathycommunicates.com
Faces Are Revealing (Blog) - www.facesarerevealing.com

Personality Profiles - www.kathycommunicates.com/fpg

Success Podcasts & Videos - www.kathycommunicates.com/podcasts
FaceBook - <http://bit.ly/successforyou>
<http://www.twitter.com/yesyoucan2>